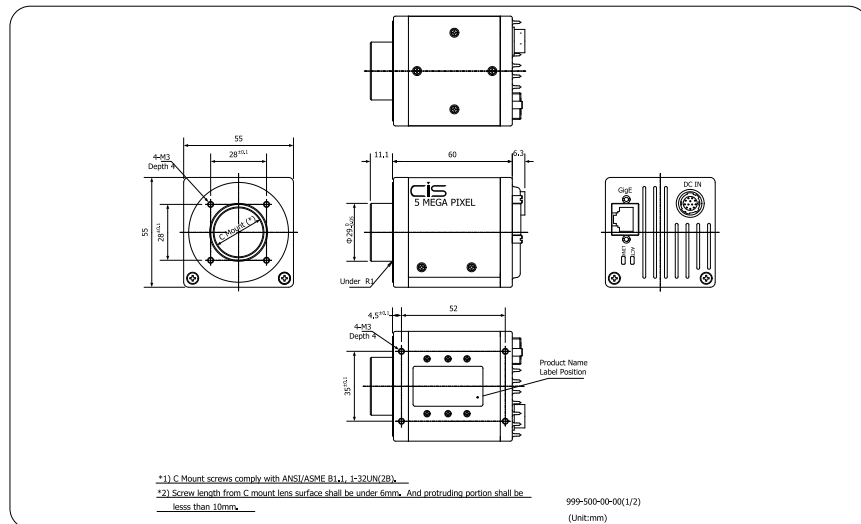


# VISION:elite™ VCC-F60FV19GE

5MP COLOR  
GigE Interface



HIGH-SPEED AND HIGH-RESOLUTION IN A COMPACT VISION CAMERA



## SPECIFICATIONS

RESOLUTION	QSXGA
SENSOR TYPE	2/3" CCD
FRAME RATE	15fps
POWER CONSUMPTION	5.8W
INPUT VOLTAGE	DC+12V ±10%
OPERATING CONDITIONS	0°C ~40°C @ 20~80% HUMIDITY
WEIGHT	190g
LENS MOUNT	C MOUNT
VIDEO OUTPUT SIGNAL	Gigabit Ethernet (Compatible to 1000BASET)
NUMBER OF EFFECTIVE PIXELS	2456 (H) x 2058 (V)
HORIZONTAL SCAN FREQUENCY	31.185KHz
PIXEL CLOCK	60MHz
PIXEL SIZE	3.45 x 3.45 (µm)
MINIMUM ILLUMINATION	F1.4 @ 15lx
SENSITIVITY	F8 @ 2000lx
STANDARD COLOR TEMPERATURE	2800-9000K
GAIN SWITCHING	0 ~ +12dB
ELECTRONIC SHUTTER	1/15 (OFF) ~ 1/30000 sec
SYNC. METHOD	Internal Sync
EXTERNAL TRIGGER	Standard Trigger / Pulse Width Exposure
PARTIAL SCAN	Available
BIT DEPTH	8 bit/10 bit



701 Fifth Ave  
Suite 4620  
Seattle, WA 98104  
800-431-CISA

www.cis-americas.com

